

LEGEND

- Primary Highway
- Secondary Highway
- Existing Railway
- Surface Water Drainage
- Waterbody
- Provincial Park
- Existing Development
- Grizzly Bear Regional Study Area
- Wildlife Regional Study Area

Planned Projects

- Cutblocks - Year 14
- Cutblocks - Year 27
- Highway 3 Realignment - Year 27
- TECK Mine Extension - Year 27

PROJECT

RIVERSDALE GRASSY MOUNTAIN
RESOURCES COAL PROJECT

TITLE
EXISTING AND PLANNED PROJECTS IN THE GRIZZLY BEAR REGIONAL STUDY AREA

NOTES
 AltaLIS, 2016; Geobase, 2015; MEMS, 2016; RapidEye, 2015
 (Image Date: Jul 26/13); Riversdale, 2016
 Datum/Projection: UTM NAD 83 Zone 11

PROJECT: 14-00201-01
 DRAWN BY: HS/SL
 CHECKED BY: MB
 DATE: JUNE 16, 2016

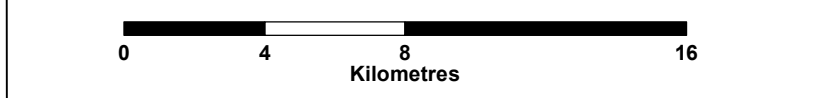
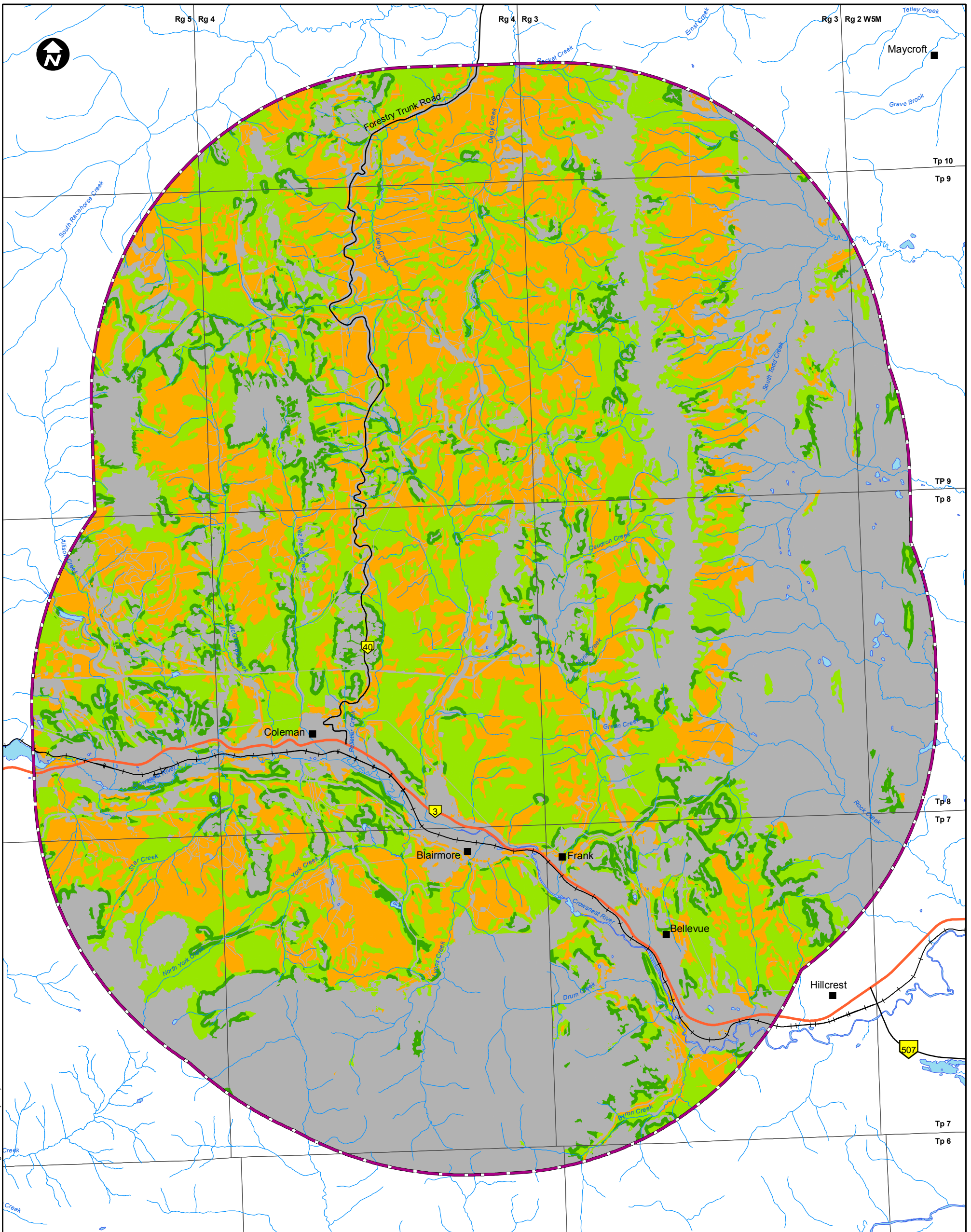


FIGURE
6.1-1



LEGEND

- Primary Highway
- Secondary Highway
- Existing Railway
- Surface Water Drainage
- Waterbody
- Wildlife Regional Study Area

Olive-sided Flycatcher Habitat Suitability

- High
- Moderate
- Low
- Nil

PROJECT



RIVERSDALE
RESOURCES

**GRASSY MOUNTAIN
COAL PROJECT**



TITLE

**AVAILABILITY OF OLIVE-SIDED FLYCATCHER HABITAT IN
THE WILDLIFE REGIONAL STUDY AREA - BASELINE CASE**

NOTES

AltaLIS, 2015; Geobase, 2015; MEMS, 2015; Riversdale, 2015
Datum/Projection: UTM NAD 83 Zone 11

PROJECT: 14-00201-01

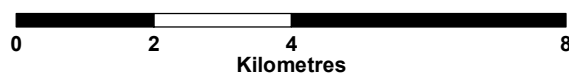
DRAWN BY: HS/SL

CHECKED BY: JP

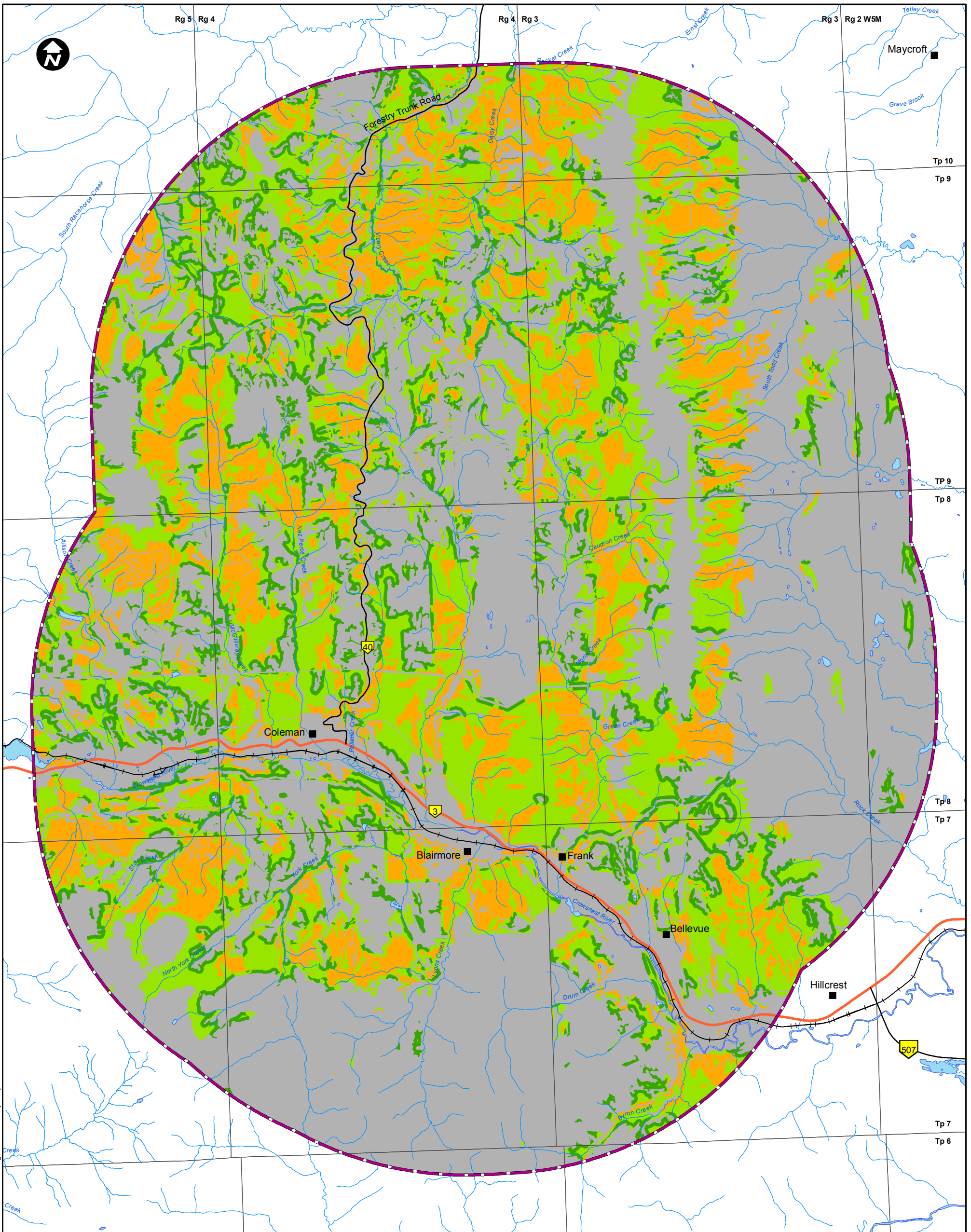
DATE: OCTOBER 13, 2015

FIGURE

6.3-1



Document Path: K:\Active Projects 2014\AP 14-00201 to 14-00250\14-00201\Figures\Wildlife\Resubmission\Fig 6.3-1 - Availability of Flycatcher Habitat RSA Baseline.mxd



Document Path: K:\Active Projects 2014\AP 14-00201 to 14-00250\14-00201\Figures\Wildlife\Resubmission\Fig 6.3-2 - Availability of Flycatcher Habitat RSA - PDC Year 14.mxd

LEGEND

- Primary Highway
- Secondary Highway
- Existing Railway
- Surface Water Drainage
- Waterbody
- Wildlife Regional Study Area

Olive-sided Flycatcher Habitat Suitability

- High
- Moderate
- Low
- Nil

PROJECT



**GRASSY MOUNTAIN
COAL PROJECT**



TITLE

**AVAILABILITY OF OLIVE-SIDED FLYCATCHER HABITAT IN
THE WILDLIFE REGIONAL STUDY AREA - PDC YEAR 14**

NOTES

AltaLIS, 2016; Geobase, 2015; MEMS, 2016; Riversdale, 2016
Datum/Projection: UTM NAD 83 Zone 11

PROJECT: 14-00201-01

DRAWN BY: SL

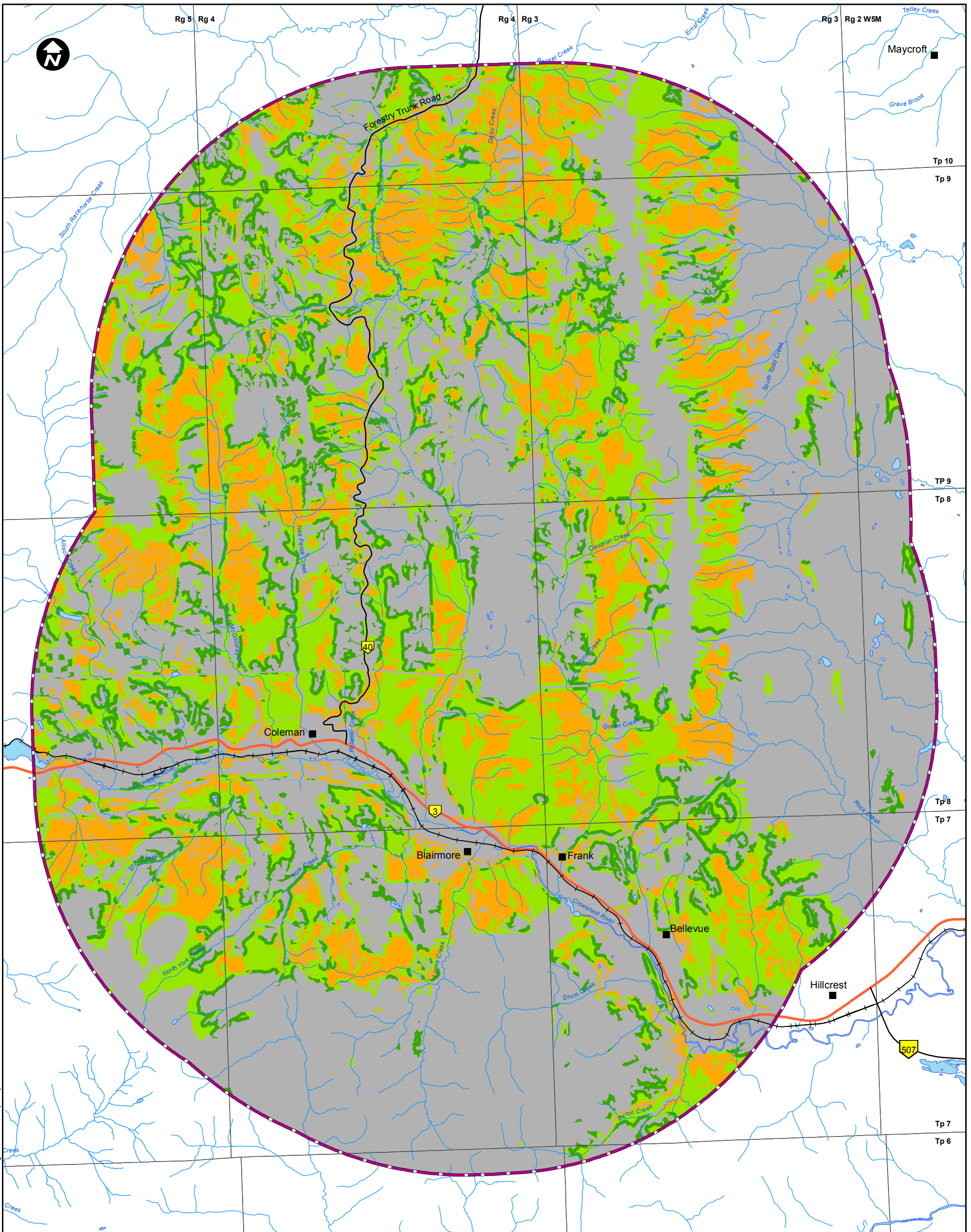
CHECKED BY: RM

DATE: JUNE 20, 2016

FIGURE

6.3-2





LEGEND

- Primary Highway
- Secondary Highway
- Existing Railway
- Surface Water Drainage
- Waterbody
- Wildlife Regional Study Area

Olive-sided Flycatcher Habitat Suitability

- High
- Moderate
- Low
- Nil

PROJECT

RIVERSDALE RESOURCES **GRASSY MOUNTAIN COAL PROJECT**

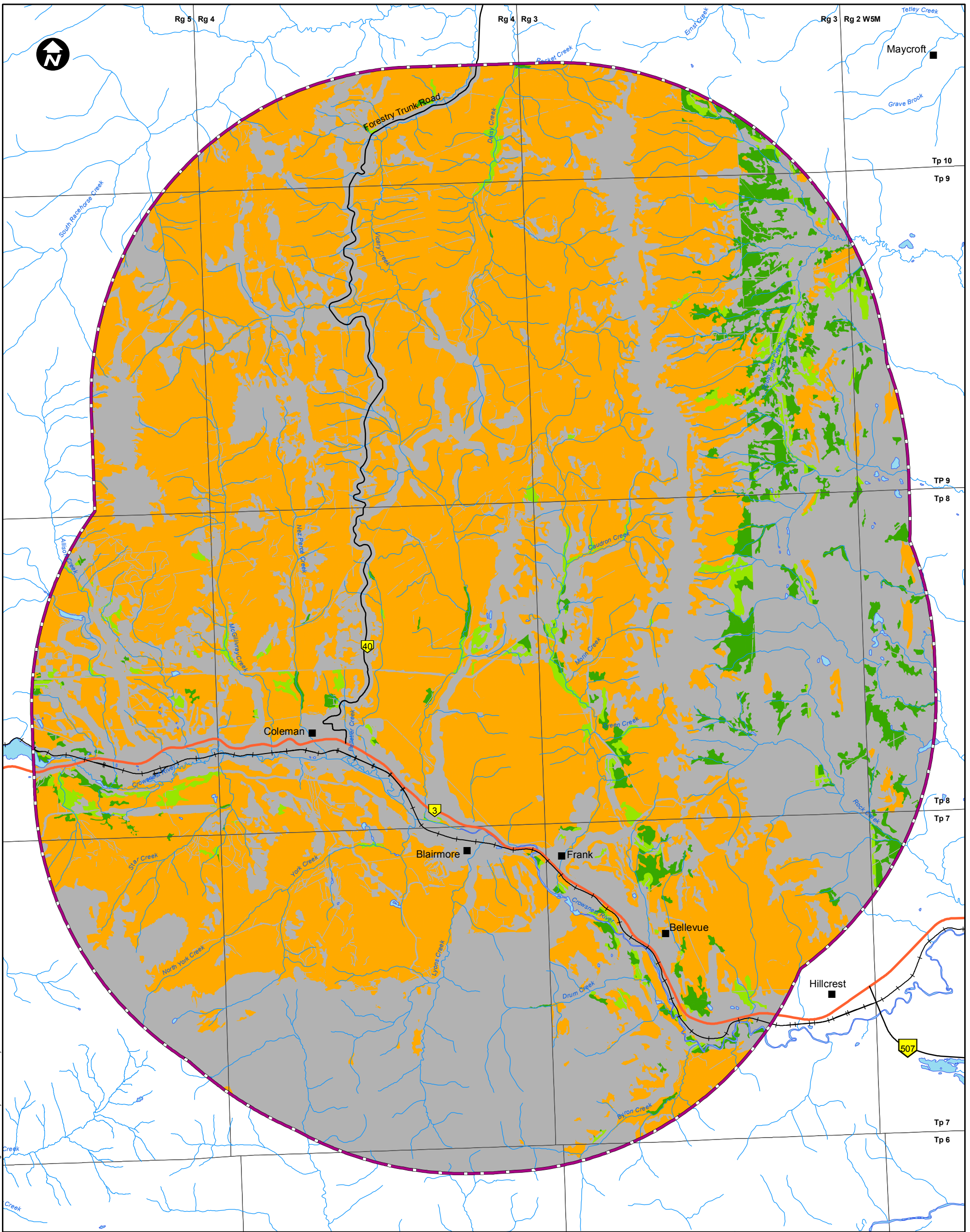
MILLENNIUM
EMS Solutions Ltd.

TITLE
AVAILABILITY OF OLIVE-SIDED FLYCATCHER HABITAT IN THE WILDLIFE REGIONAL STUDY AREA - PDC YEAR 27

NOTES
 AltaLIS, 2016; Geobase, 2015; MEMS, 2016; Riversdale, 2016
 Datum/Projection: UTM NAD 83 Zone 11

PROJECT: 14-00201-01
 DRAWN BY: SL
 CHECKED BY: RM
 DATE: JUNE 20, 2016

FIGURE
6.3-3



Document Path: K:\Active Projects 2014\AP 14-00201 to 14-00250\14-00201\MXD\Final\Figures\Wildlife\Resubmission\Fig 6.3-4 - Availability of Little Brown Myotis Habitat RSA Baseline.mxd

LEGEND

- Primary Highway
- Secondary Highway
- Existing Railway
- Surface Water Drainage
- Waterbody
- Wildlife Regional Study Area

- Little Brown Myotis Habitat Suitability**
- High
 - Moderate
 - Low
 - Nil

PROJECT

RIVERSDALE GRASSY MOUNTAIN
RESOURCES COAL PROJECT



TITLE

AVAILABILITY OF LITTLE BROWN MYOTIS HABITAT IN THE WILDLIFE REGIONAL STUDY AREA - BASELINE CASE

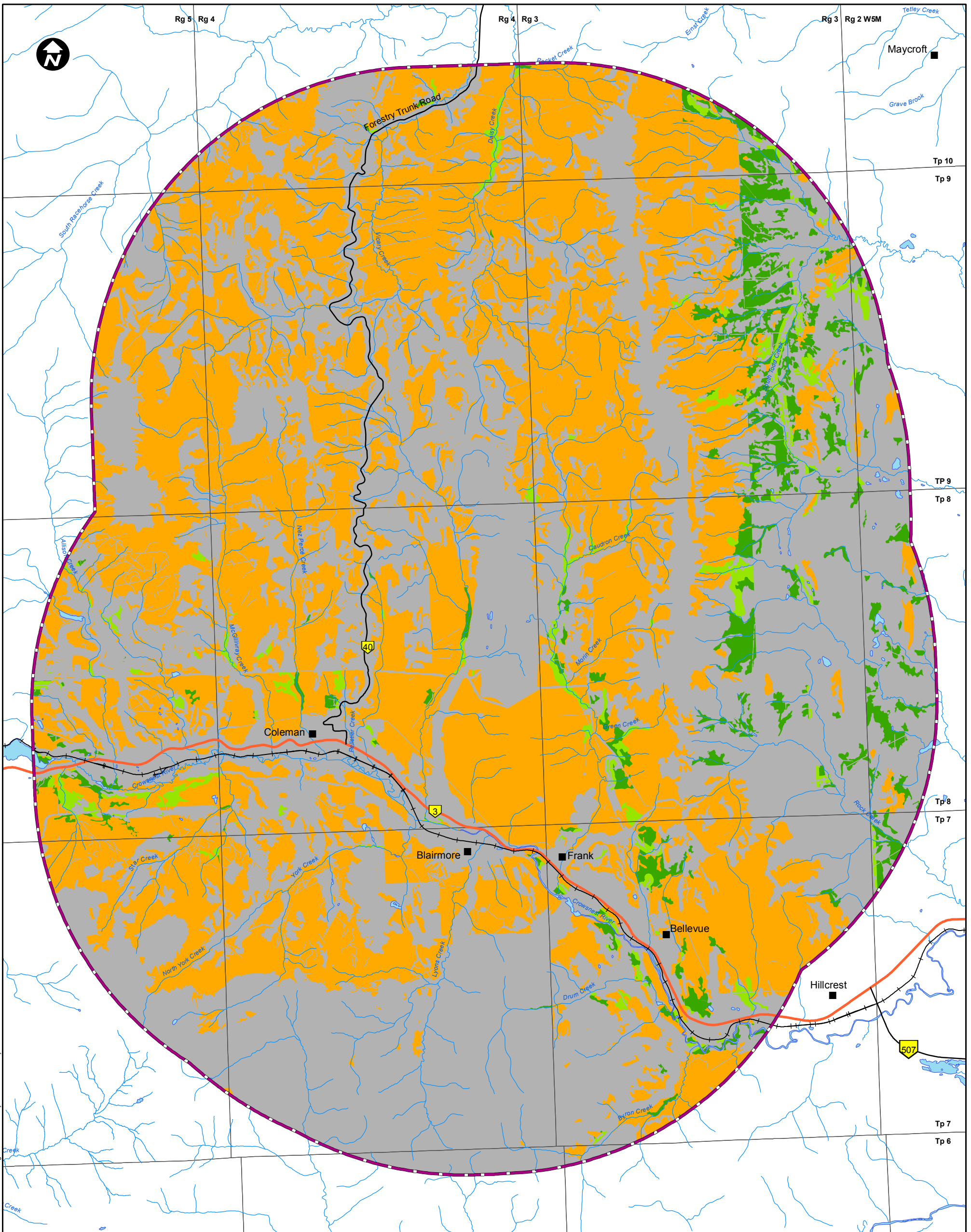
NOTES

AltaLIS, 2015; Geobase, 2015; MEMS, 2015; Riversdale, 2015
Datum/Projection: UTM NAD 83 Zone 11

PROJECT: 14-00201-01
DRAWN BY: HS
CHECKED BY: JP
DATE: OCTOBER 13, 2015



FIGURE
6.3-4



Document Path: K:\Active Projects\2014\WP_14-00201\14-00201\Figures\Wildlife\Resubmission\Fig 6.3-5 - Availability of Little Brown Myotis Habitat RSA - PDC Year 14.mxd

LEGEND

- Primary Highway
- Secondary Highway
- Existing Railway
- Surface Water Drainage
- Waterbody
- Wildlife Regional Study Area

Little Brown Myotis Habitat Suitability

- High
- Moderate
- Low
- Nil

PROJECT



RIVERSDALE
RESOURCES

**GRASSY MOUNTAIN
COAL PROJECT**



TITLE

**AVAILABILITY OF LITTLE BROWN MYOTIS HABITAT IN
THE WILDLIFE REGIONAL STUDY AREA - PDC YEAR 14**

NOTES

AltaLIS, 2016; Geobase, 2015; MEMS, 2016; Riversdale, 2016
Datum/Projection: UTM NAD 83 Zone 11

PROJECT: 14-00201-01

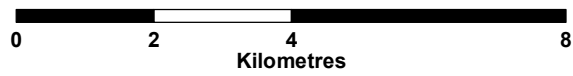
DRAWN BY: SL

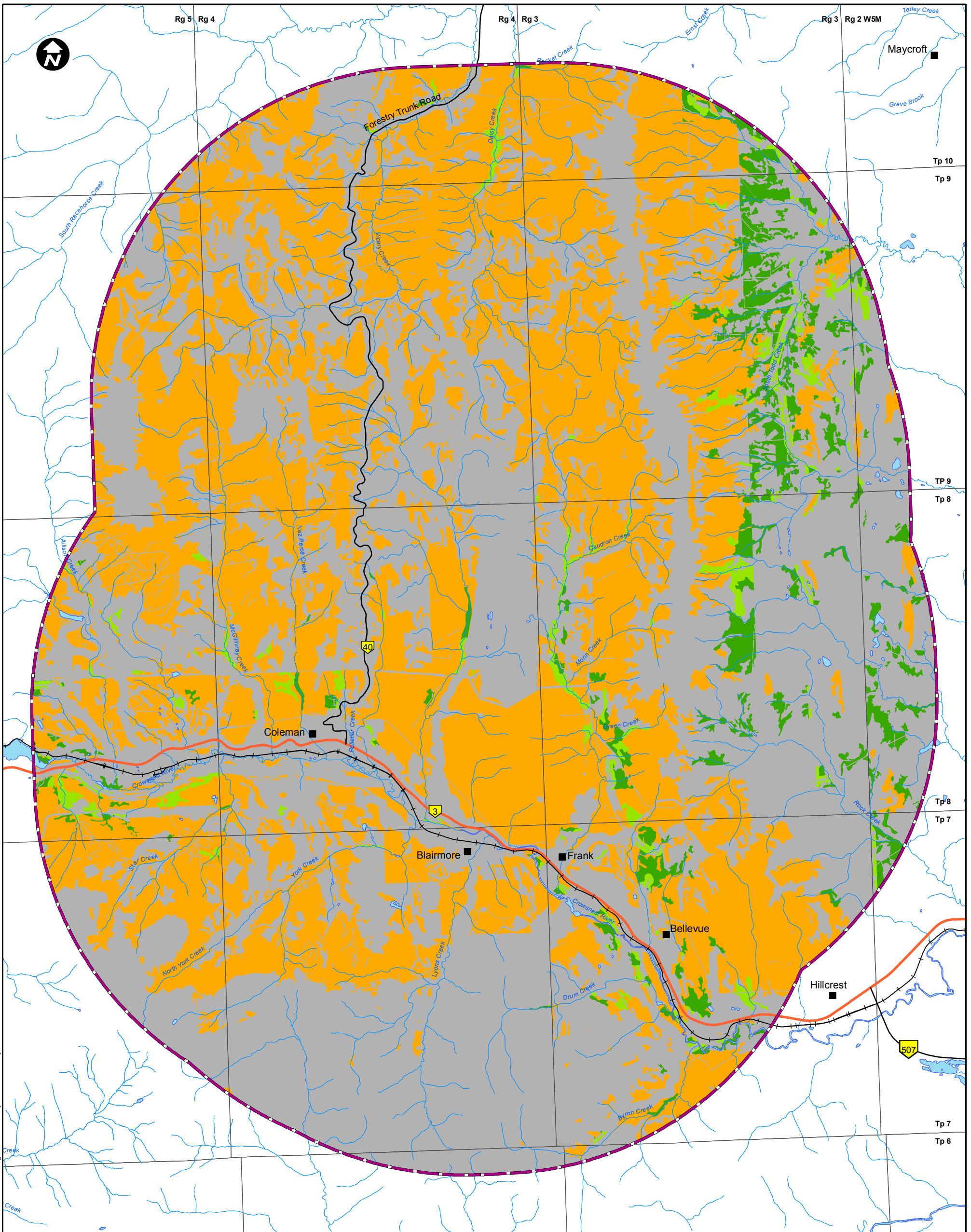
CHECKED BY: RM

DATE: JUNE 20, 2016

FIGURE

6.3-5





Document Path: K:\Active Projects\2014\AP_14-00201\14-00201-01\Map\14-00201-01\Figures\Wildlife\Resubmission\Fig 6.3-6 - Availability of Little Brown Myotis Habitat RSA - PDC Year 27.mxd

LEGEND

- Primary Highway
- Secondary Highway
- Existing Railway
- Surface Water Drainage
- Waterbody
- Wildlife Regional Study Area

Little Brown Myotis Habitat Suitability

- High
- Moderate
- Low
- Nil

PROJECT



RIVERSDALE
RESOURCES

**GRASSY MOUNTAIN
COAL PROJECT**



TITLE

**AVAILABILITY OF LITTLE BROWN MYOTIS HABITAT IN
THE WILDLIFE REGIONAL STUDY AREA - PDC YEAR 27**

NOTES

AltaLIS, 2016; Geobase, 2015; MEMS, 2016; Riversdale, 2016
Datum/Projection: UTM NAD 83 Zone 11

PROJECT: 14-00201-01

DRAWN BY: SL

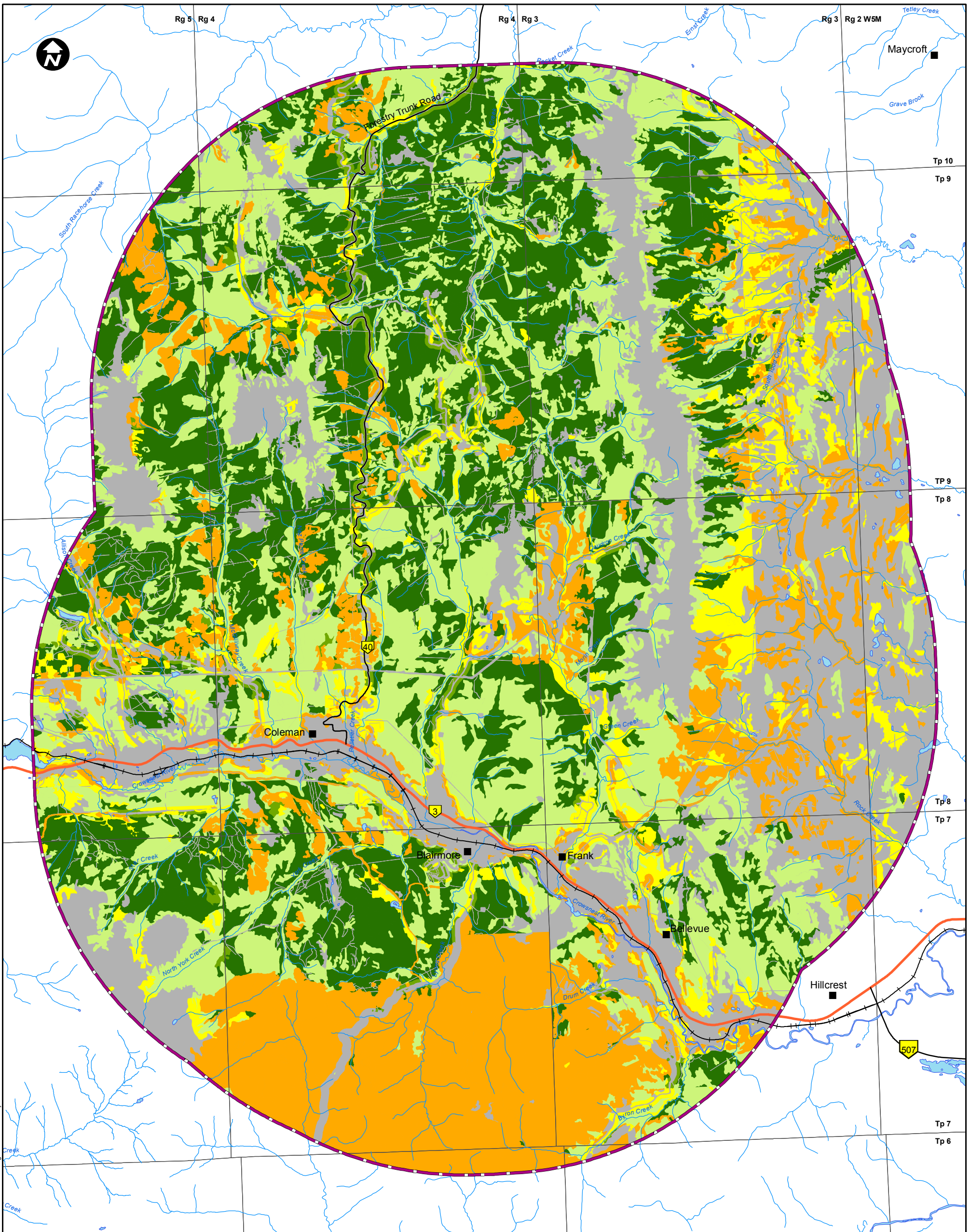
CHECKED BY: RM

DATE: JUNE 20, 2016

FIGURE

6.3-6





LEGEND

- Primary Highway
- Secondary Highway
- + Existing Railway
- Surface Water Drainage
- Waterbody
- Wildlife Regional Study Area

American Marten Habitat Suitability

- High
- Moderate-High
- Moderate
- Moderate-Low
- Low
- Nil

PROJECT



RIVERSDALE
RESOURCES

**GRASSY MOUNTAIN
COAL PROJECT**



TITLE

**AVAILABILITY OF AMERICAN MARTEN HABITAT IN THE
WILDLIFE REGIONAL STUDY AREA - BASELINE CASE**

NOTES

AltaLIS, 2015; Geobase, 2015; MEMS, 2015; Riversdale, 2015
Datum/Projection: UTM NAD 83 Zone 11

PROJECT: 14-00201-01

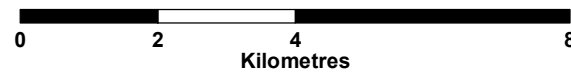
DRAWN BY: HS

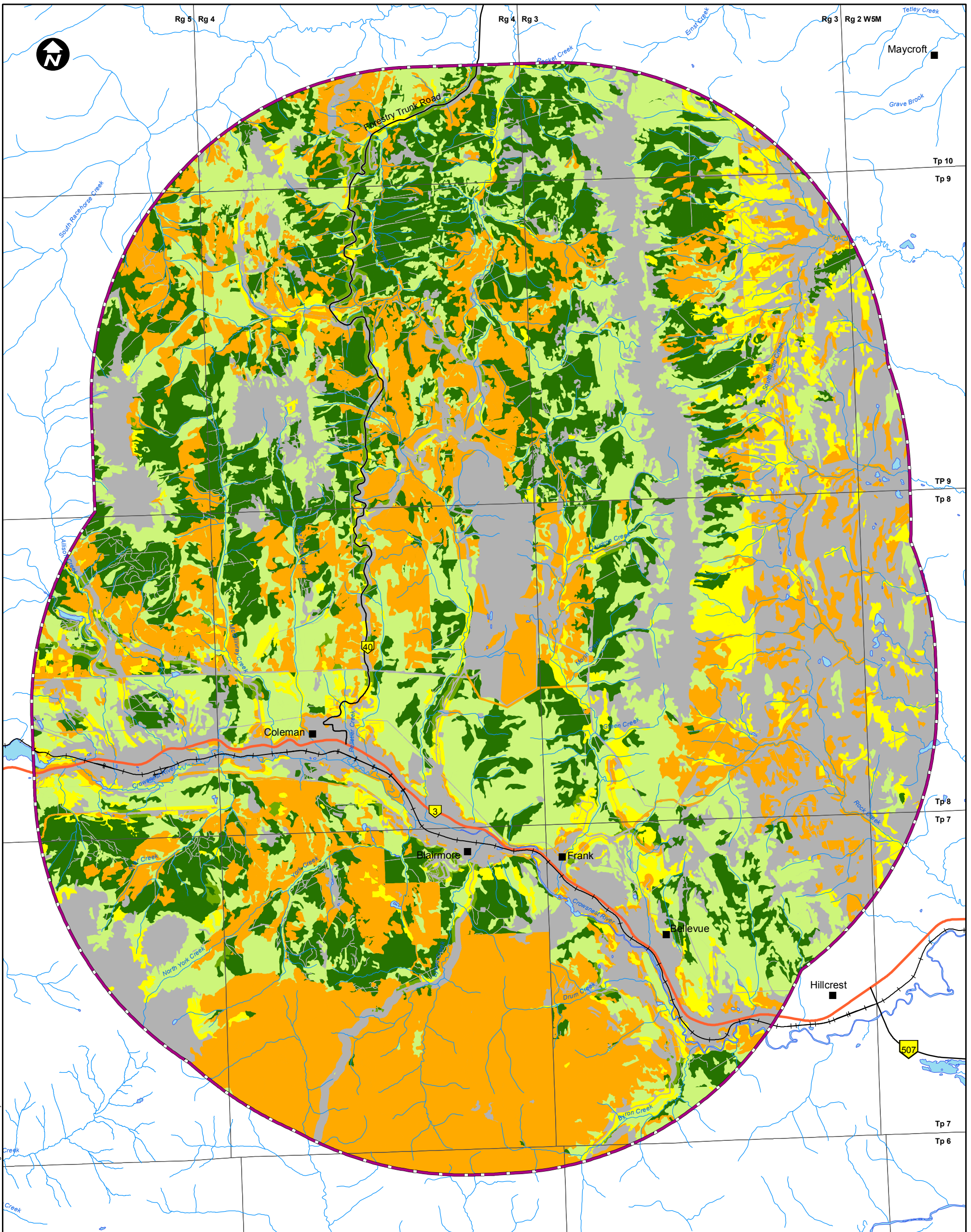
CHECKED BY: JP

DATE: OCTOBER 09, 2015

FIGURE

6.3-7





LEGEND

- Primary Highway
- Secondary Highway
- Existing Railway
- Surface Water Drainage
- Waterbody
- Wildlife Regional Study Area

American Marten Habitat Suitability

- High
- Moderate-High
- Moderate
- Moderate-Low
- Low
- Nil

PROJECT



RIVERSDALE
RESOURCES

**GRASSY MOUNTAIN
COAL PROJECT**



TITLE

**AVAILABILITY OF AMERICAN MARTEN HABITAT IN THE
WILDLIFE REGIONAL STUDY AREA - PDC YEAR 14**

NOTES

AltaLIS, 2016; Geobase, 2015; MEMS, 2016; Riversdale, 2016
Datum/Projection: UTM NAD 83 Zone 11

PROJECT: 14-00201-01

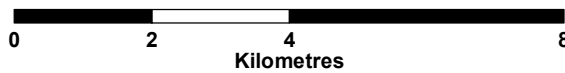
DRAWN BY: SL

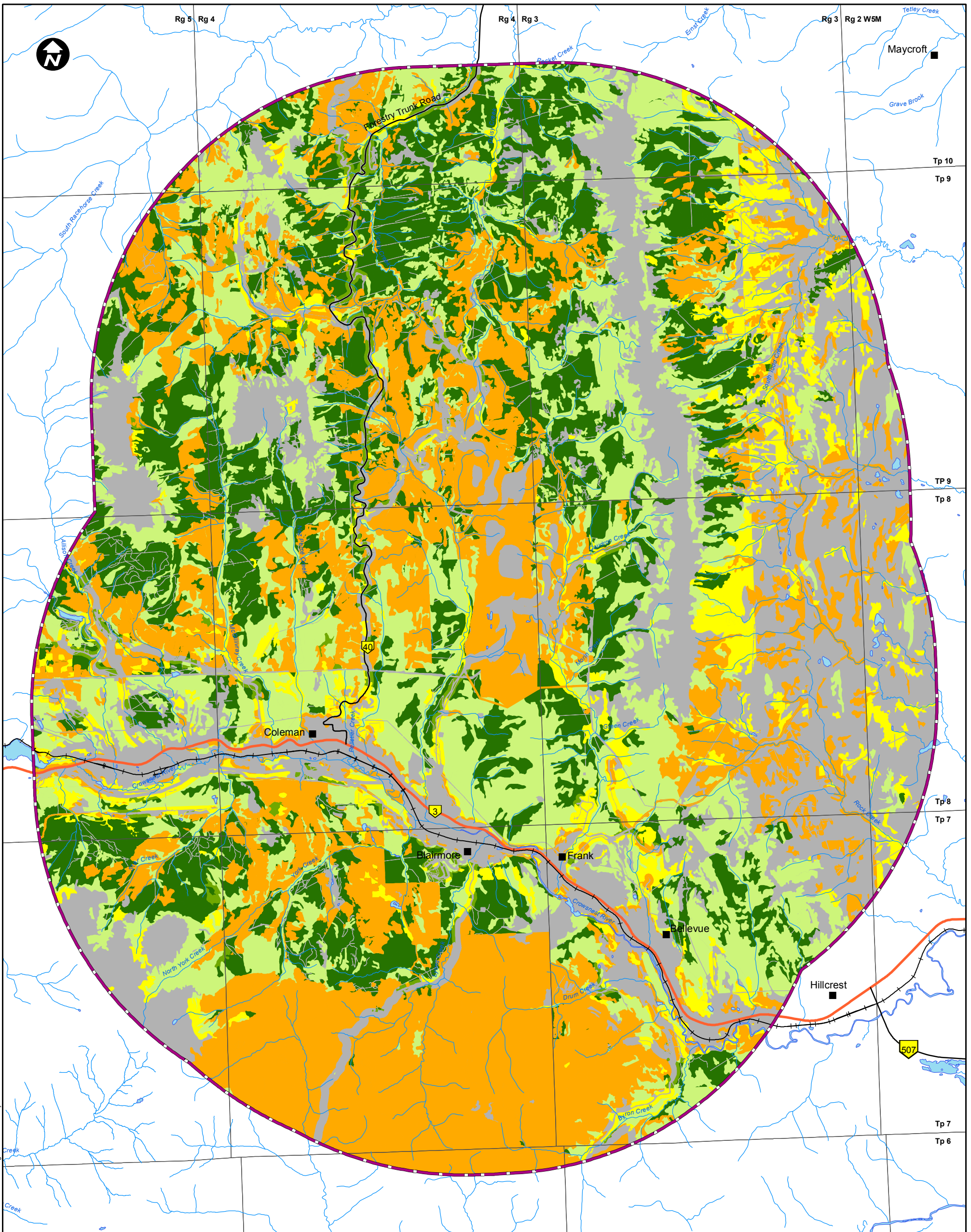
CHECKED BY: RM

DATE: JUNE 20, 2016

FIGURE

6.3-8





LEGEND

- Primary Highway
- Secondary Highway
- Existing Railway
- Surface Water Drainage
- Waterbody
- Wildlife Regional Study Area

American Marten Habitat Suitability

- High
- Moderate-High
- Moderate
- Moderate-Low
- Low
- Nil

PROJECT



RIVERSDALE
RESOURCES

**GRASSY MOUNTAIN
COAL PROJECT**



TITLE

**AVAILABILITY OF AMERICAN MARTEN HABITAT IN THE
WILDLIFE REGIONAL STUDY AREA - PDC YEAR 27**

NOTES

AltaLIS, 2016; Geobase, 2015; MEMS, 2016; Riversdale, 2016
Datum/Projection: UTM NAD 83 Zone 11

PROJECT: 14-00201-01

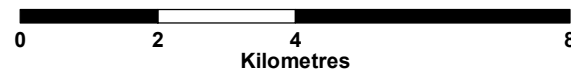
DRAWN BY: SL

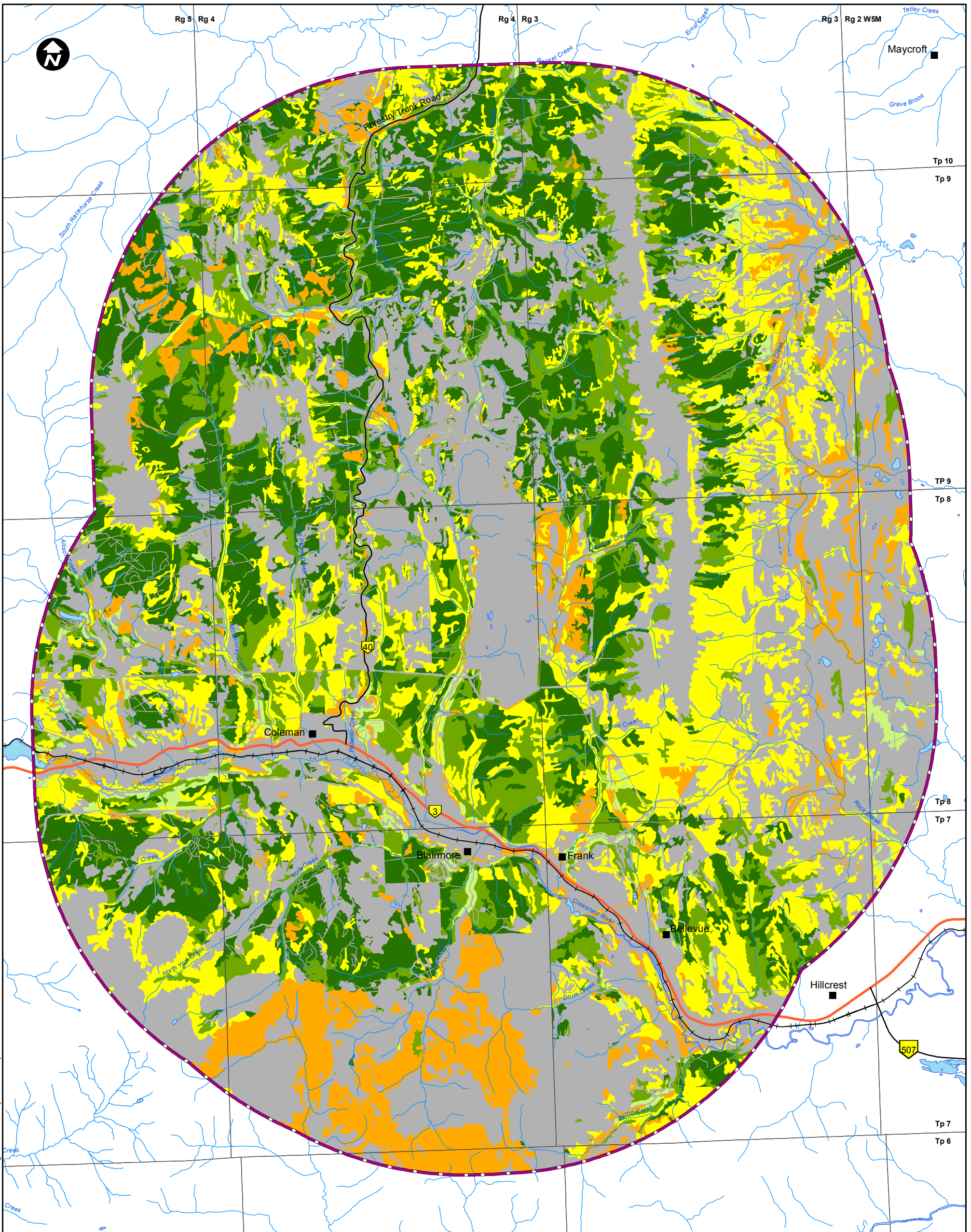
CHECKED BY: RM

DATE: JUNE 20, 2016

FIGURE

6.3-9





LEGEND

- Primary Highway
- Secondary Highway
- Existing Railway
- Surface Water Drainage
- Waterbody
- Wildlife Regional Study Area

Canada Lynx Habitat Suitability

- High
- Moderate-High
- Moderate
- Moderate-Low
- Low
- Nil

PROJECT

RIVERSDALE RESOURCES **GRASSY MOUNTAIN COAL PROJECT**

MILLENNIUM
EMS Solutions Ltd.

TITLE
AVAILABILITY OF CANADA LYNX HABITAT IN THE WILDLIFE REGIONAL STUDY AREA - PDC YEAR 14

NOTES
 AltaLIS, 2016; Geobase, 2015; MEMS, 2016; Riversdale, 2016
 Datum/Projection: UTM NAD 83 Zone 11

PROJECT: 14-00201-01
 DRAWN BY: SL
 CHECKED BY: RM
 DATE: JUNE 20, 2016

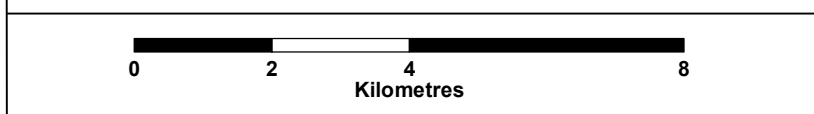
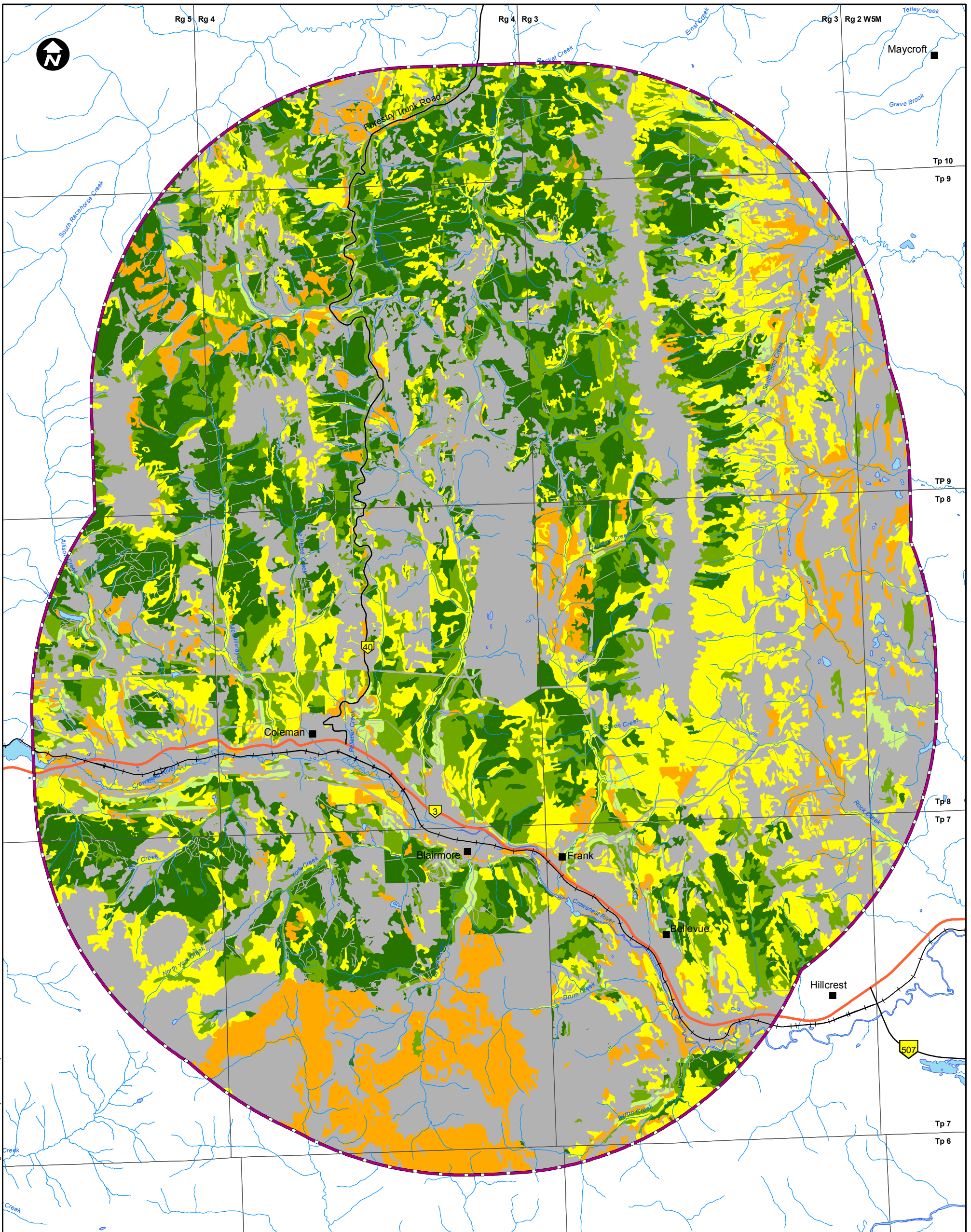


FIGURE
6.3-10



LEGEND

- Primary Highway
- Secondary Highway
- Existing Railway
- Surface Water Drainage
- Waterbody
- Wildlife Regional Study Area

Canada Lynx Habitat Suitability

- High
- Moderate-High
- Moderate
- Moderate-Low
- Low
- Nil

PROJECT

RIVERSDALE RESOURCES **GRASSY MOUNTAIN COAL PROJECT**

MILLENNIUM
EMS Solutions Ltd.

TITLE
AVAILABILITY OF CANADA LYNX HABITAT IN THE WILDLIFE REGIONAL STUDY AREA - PDC YEAR 27

NOTES
AltaLIS, 2016; Geobase, 2015; MEMS, 2016; Riversdale, 2016
Datum/Projection: UTM NAD 83 Zone 11

PROJECT: 14-00201-01
DRAWN BY: SL
CHECKED BY: RM
DATE: JUNE 20, 2016

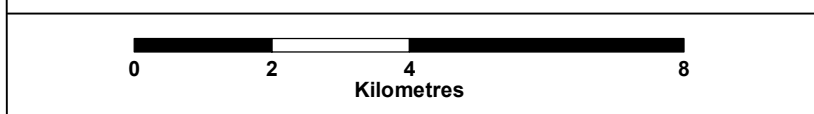
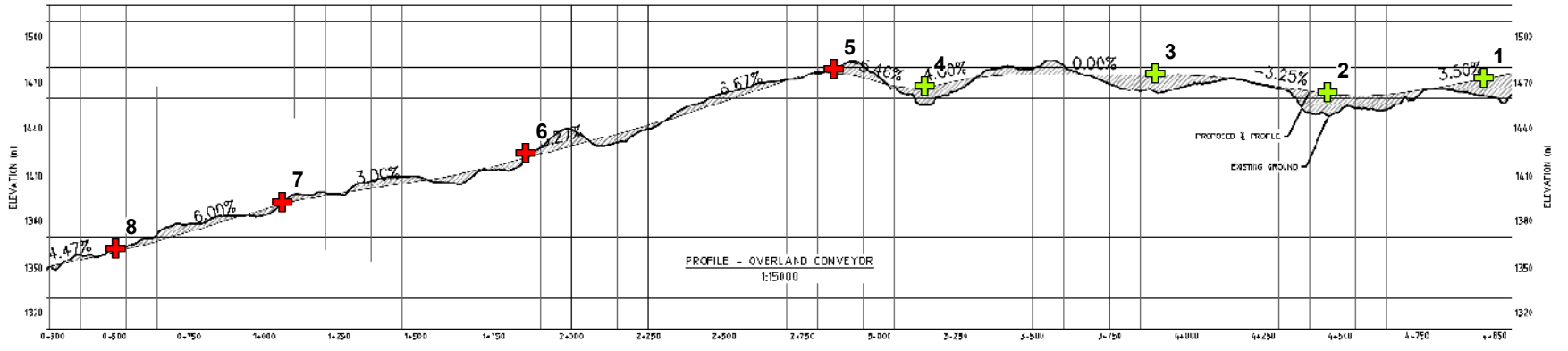
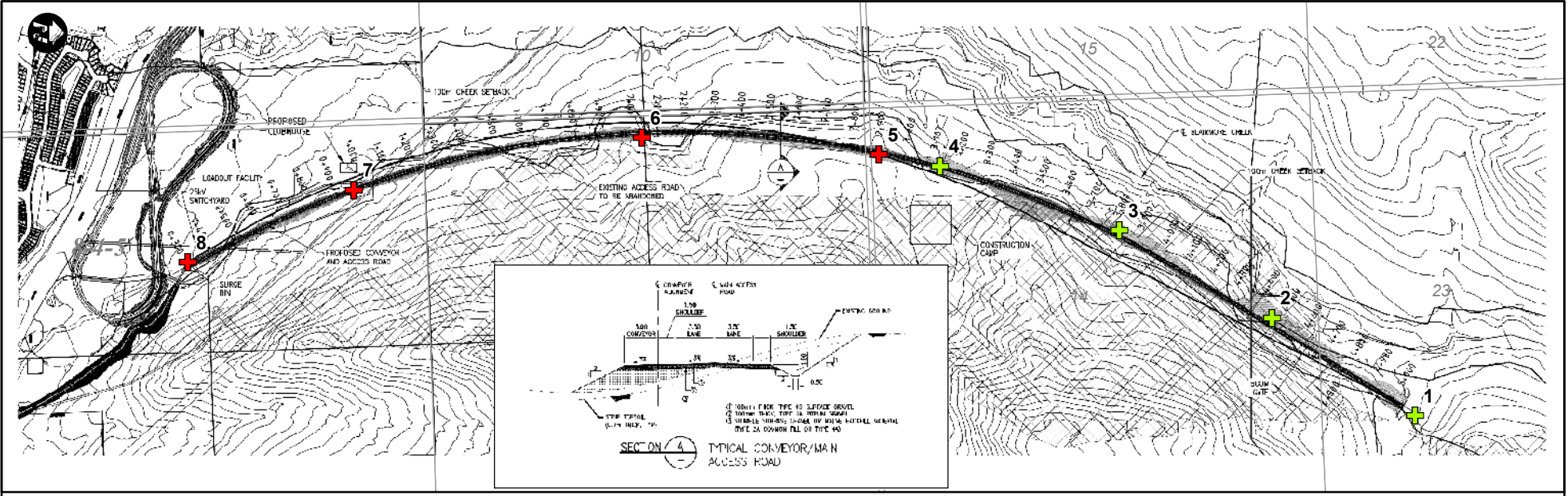


FIGURE
6.3-11

Document Path: K:\Active Projects\2014\AP_14-00201 to 14-00250\14-00201\MXD\Final\Figures\Wildlife\Resubmission\Fig 7.1-1 - Potential Wildlife Crossings for the Proposed Conveyor Route.mxd

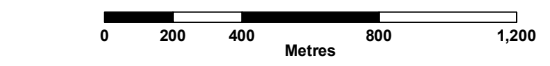


LEGEND
Location of Proposed Wildlife Crossing
+ Natural Due to Topography
+ Man-Made Crossing Required

PROJECT
GRASSY MOUNTAIN COAL PROJECT

TITLE
POTENTIAL WILDLIFE CROSSING LOCATIONS FOR THE PROPOSED COAL CONVEYOR ROUTE

NOTES
 AltaLIS, 2015; MEMS, 2015
 Datum/Projection: UTM NAD 83 Zone 11



PROJECT: 14-00201
 DRAWN BY: JK/SL
 CHECKED BY: JP
 DATE: OCTOBER 21, 2015
FIGURE
7.1-1