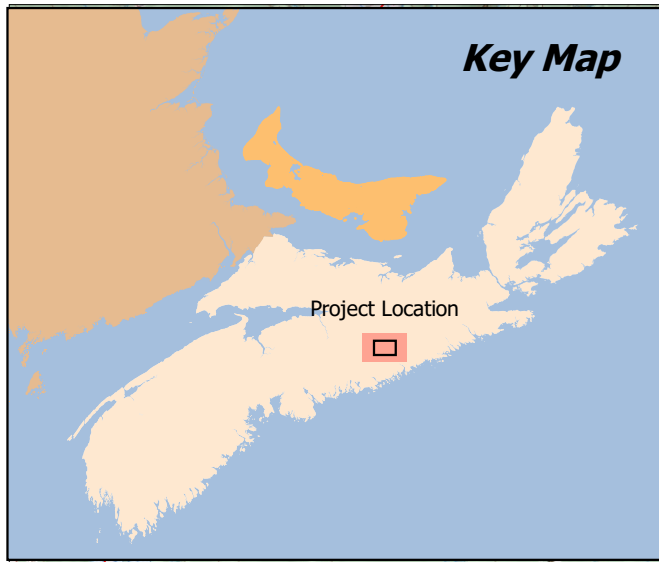




## **Appendix M.2**




Visual Simulations – November 2020 and May 2021  
Completed for the Updated 2021 Beaver Dam Mine EIS



**Beaver Dam Mine  
Project**

**Zone of  
Visual Influence**

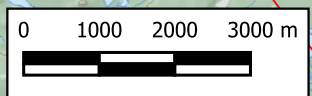
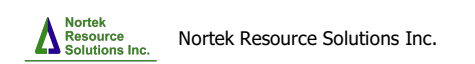
**Legend**

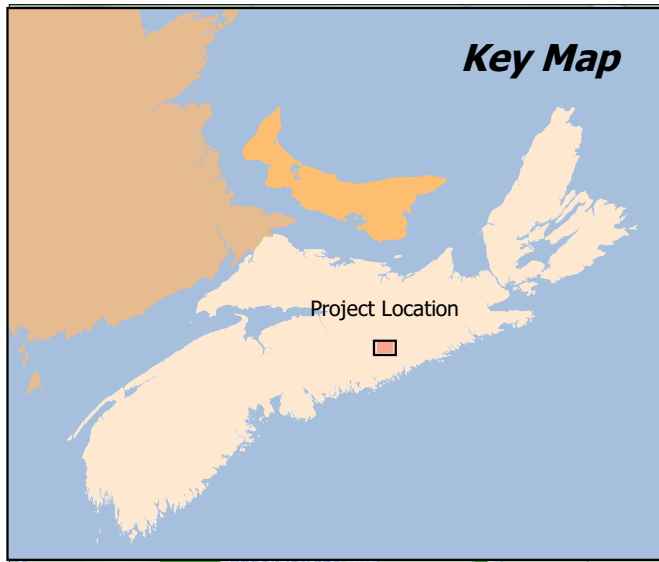
-  Beaver Dam IR
-  Proposed Stockpiles
-  Stockpiles Visible



Map Data:  
Digital Topographic Mapping by the Nova Scotia Geomatics Center.  
Nova Scotia Forest Inventory Database

Modeled Using:  
Maximum Stockpile Elevation  
Eye Ht: 1.5 m





**Beaver Dam Mine Project**

**Zone of Visual Influence**

**Legend**

- Camera Position
- Field of View
- Field of View Site 2
- Proposed Stockpile
- Proposed Open Pit
- Stockpiles Visible

**Feature Codes**

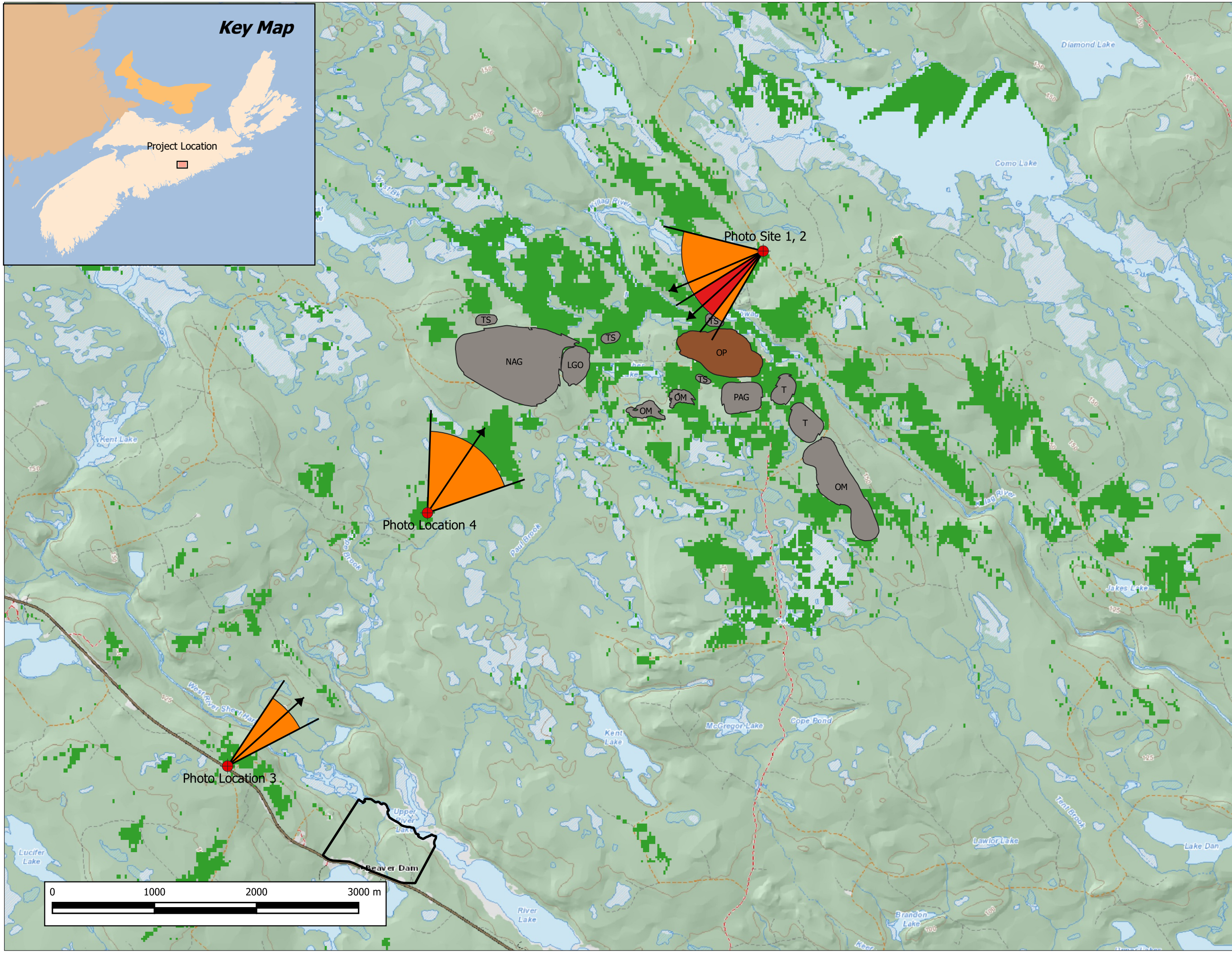
Code	Description
LGO	Low Grade Stockpile
NAG	NAG Stockpile
OM	Organic Material
OP	Open Pit
PAG	PAG Stockpile
T	Till Stockpile
TS	TSSP



Map Data: Digital Topographic Mapping by the Nova Scotia Geomatics Center.  
Nova Scotia Forest Inventory Database

Modeled Using:  
Maximum Stockpile Elevation  
Eye Ht: 1.5 m

Nortek Resource Solutions Inc.





Original Photograph



Visual Simulation Operations Phase

Operational Stockpile



Visual Simulation Reclamation Stage

Reclaimed Stockpile

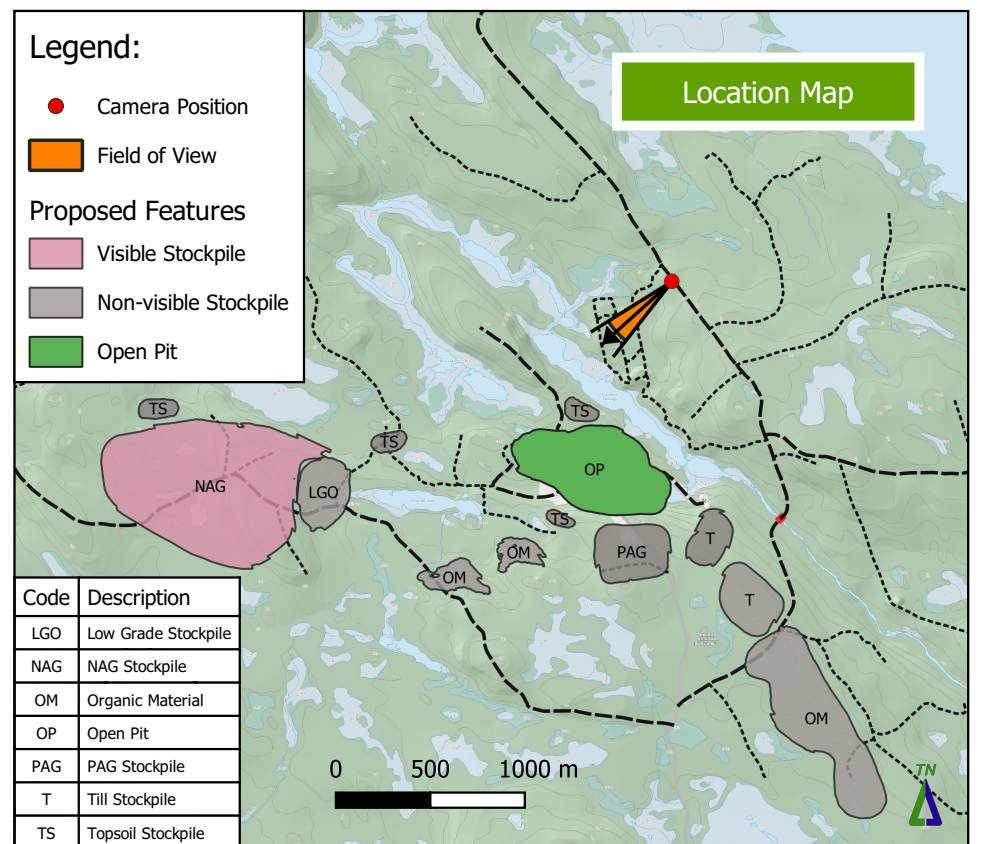
### Beaver Dam Mine Project

Visual Simulation 1  
Killag River Road

Image: Easting: 522,645  
Northing: 4,991,324  
Photograph Date: Sept. 2, 2019  
View Angle: 228 Degrees True

Stockpile: NAG Stockpile  
Maximum Elevation (asl): 185 m  
Field of View: 20 Degrees

Coordinate System	UTM, NAD83, Zone 20	Jan 7, 2020
Analysis By: Nortek Resource Solutions Inc.		



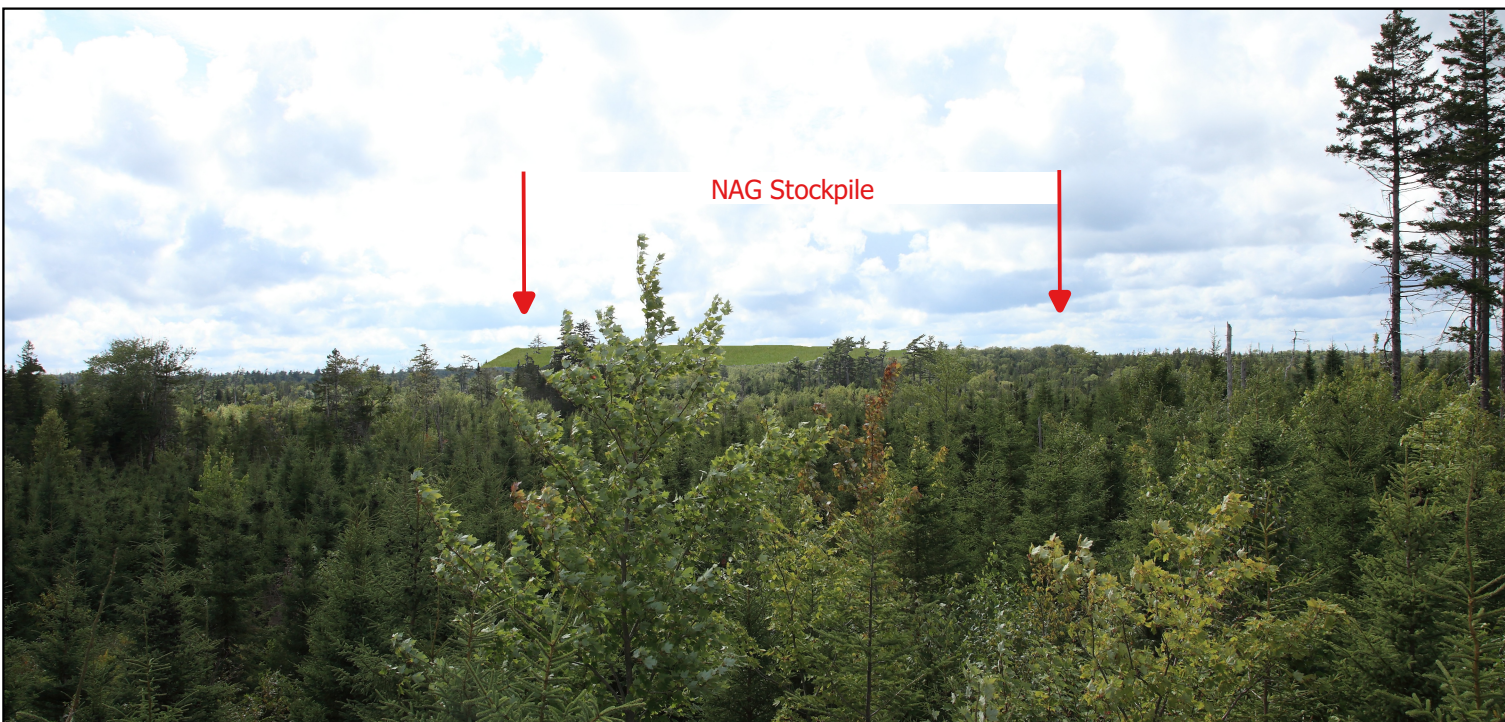


Original Photograph



Visual Simulation Operations Phase

Operational Stockpile



Visual Simulation Reclamation Stage

Reclaimed Stockpile

## Beaver Dam Mine Project

### Visual Simulation 2 Killag River Road

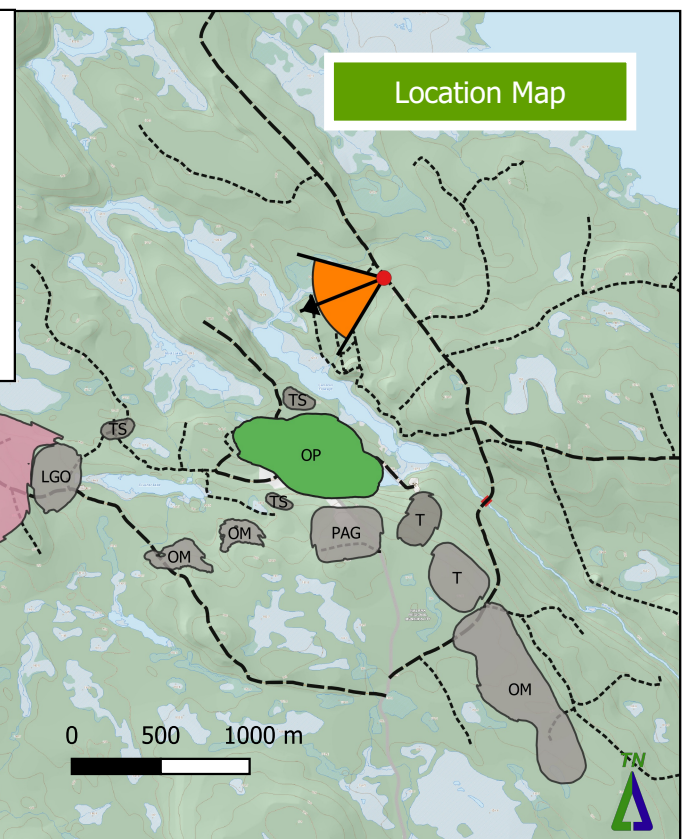
Image: Easting: 522,645  
 Northing: 4,991,324  
 Photograph Date: Sept. 2, 2019  
 View Angle: 247 Degrees True

Stockpile NAG Stockpile  
 Maximum Elevation (asl): 185 m  
 Field of View: 74 Degrees

#### Legend:

- Camera Position
- Field of View
- Proposed Features**
- Visible Stockpile
- Non-visible Stockpile
- Open Pit

Code	Description
LGO	Low Grade Stockpile
NAG	NAG Stockpile
OM	Organic Material
OP	Open Pit
PAG	PAG Stockpile
T	Till Stockpile
TS	Topsail Stockpile



Location Map

Coordinate System UTM, NAD83, Zone 20

Jan 7, 2020



Analysis By: Nortek Resource Solutions Inc.



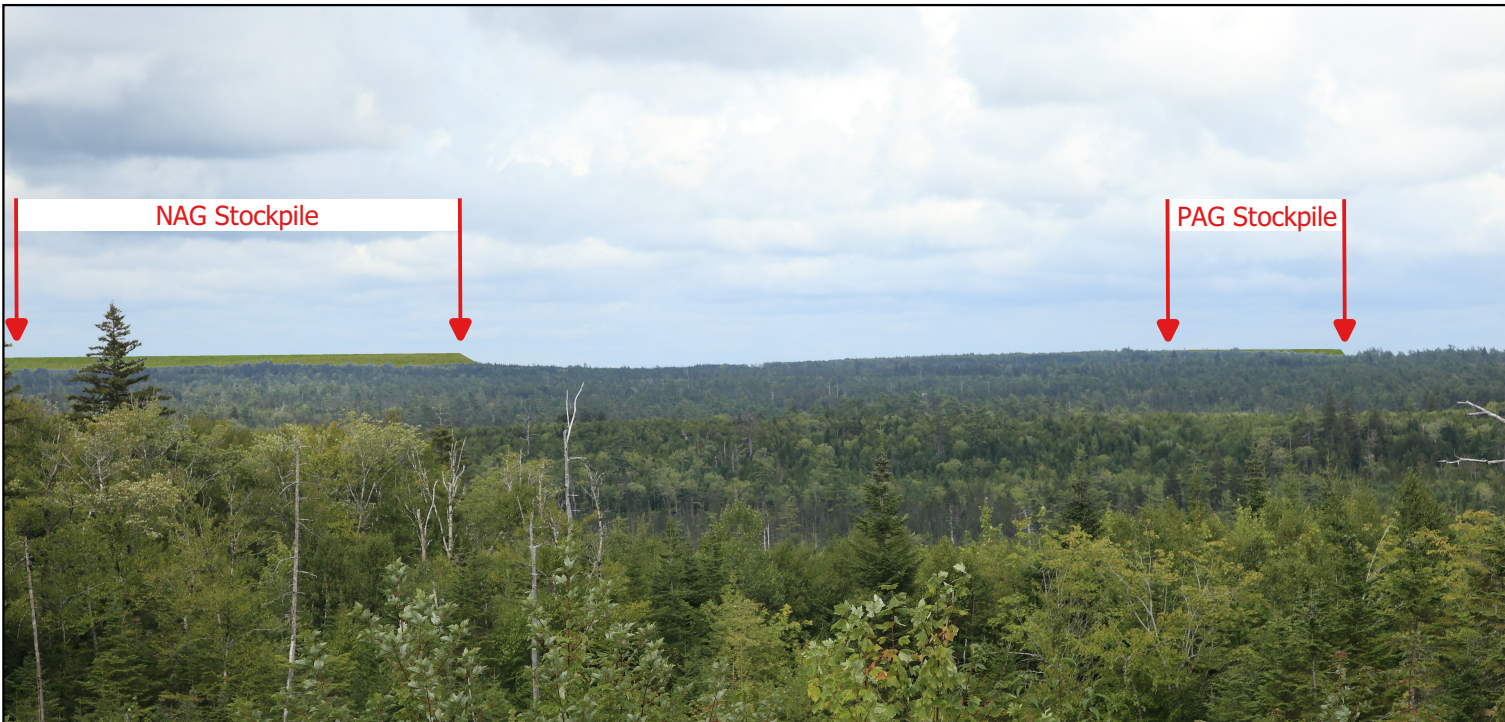


Original Photograph



Visual Simulation Operations Phase

Operational Stockpile



Visual Simulation Reclamation Stage

Reclaimed Stockpile

## Beaver Dam Mine Project

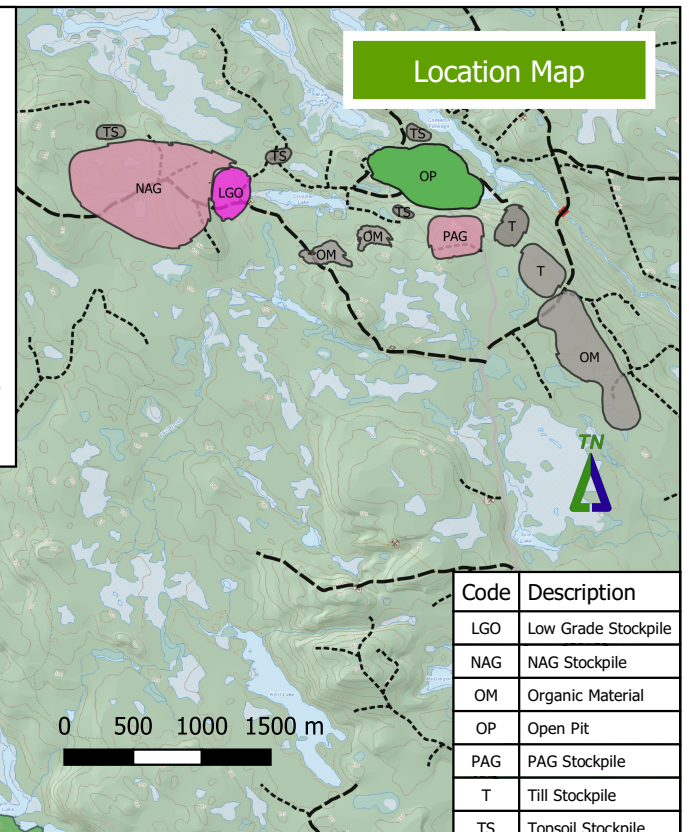
### Visual Simulation 3 Highway 224

**Image:** Easting: 517,397  
 Northing: 4,986,276  
 Photograph Date: Sept. 2, 2019  
 View Angle: 48 Degrees True

**Stockpile** NAG & PAG Stockpiles  
 Maximum Elevation (asl): 185 m  
 Field of View: 29 Degrees

#### Legend:

- Camera Position
- Field of View
- Proposed Features**
- Visible Stockpile During Operations
- Visible Stockpile
- Non-visible Stockpile
- Open Pit



Location Map

Code	Description
LGO	Low Grade Stockpile
NAG	NAG Stockpile
OM	Organic Material
OP	Open Pit
PAG	PAG Stockpile
T	Till Stockpile
TS	Topsoil Stockpile

Coordinate System UTM, NAD83, Zone 20

Jan 7, 2020



Analysis By: Nortek Resource Solutions Inc.





Original Photograph



Visual Simulation Operations Phase

Operational Stockpile



Visual Simulation Reclamation Stage

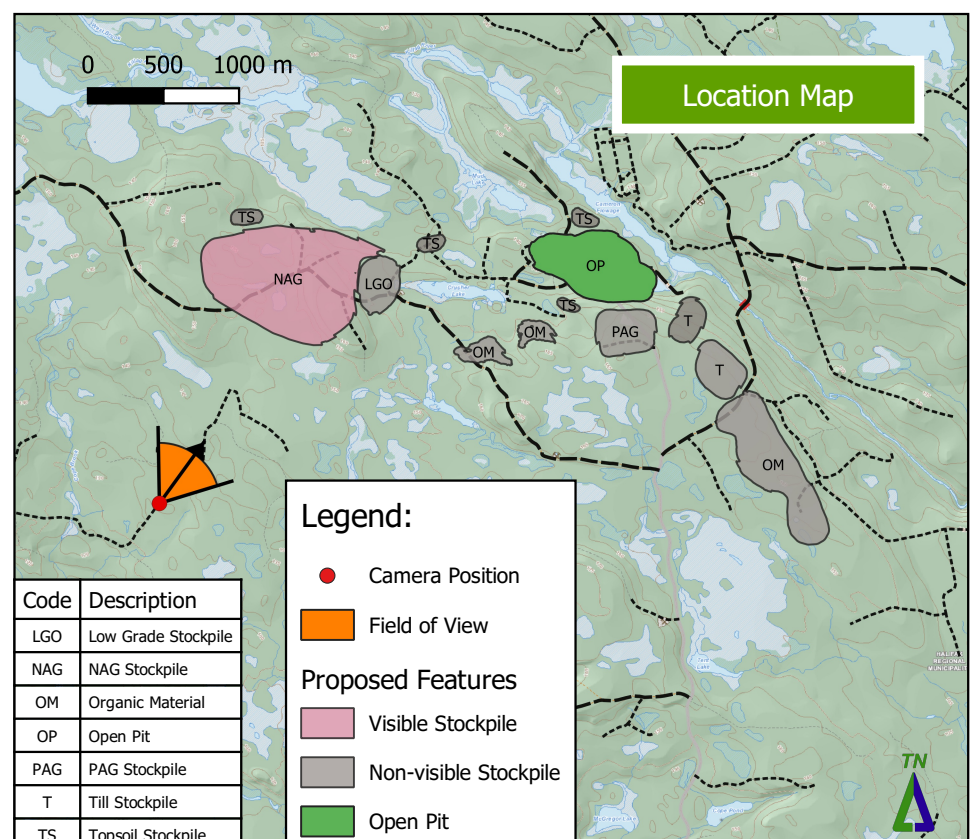
Reclaimed Stockpile

## Beaver Dam Mine Project

### Visual Simulation 4 Cope Brook Road

**Image:** Easting: 517,309  
 Northing: 4,985,236  
 Photograph Date: Sept. 6, 2019  
 View Angle: 34 Degrees True

**Stockpile:** NAG Stockpile  
 Maximum Elevation (asl): 185 m  
 Field of View: 74 Degrees



Location Map

Code	Description
LGO	Low Grade Stockpile
NAG	NAG Stockpile
OM	Organic Material
OP	Open Pit
PAG	PAG Stockpile
T	Till Stockpile
TS	Topsoil Stockpile

#### Legend:

● Camera Position

Field of View

#### Proposed Features

Visible Stockpile

Non-visible Stockpile

Open Pit

Coordinate System UTM, NAD83, Zone 20

Jan 7, 2020



Analysis By: Nortek Resource Solutions Inc.

